

This Week @ Mt. Nittany

DAY	EVENT	LOCATION
Sunday 20	8:30 am Early Worship 9:45 am Christian Education 11:00 am Late Worship	Sanctuary Various Rooms Sanctuary
Monday 21		
Tuesday 22	7:00 pm Boy Scouts #367	FLC
Wednesday 23		
Thursday 24		
Friday 25		
Saturday 26	4:00 pm Community Dinner	FLC



*Names in Bold print indicate new additions this week

Marlene Martin	Laveral Beck	Rick Hoffman
Ishler & Geist Families	Dorothy Yoder	Betty Williams
LOIS BOLLER	Darlynn Novak	Vija Wilkinson



1500 East Branch Road
State College, PA 16801
(814) 237-3549

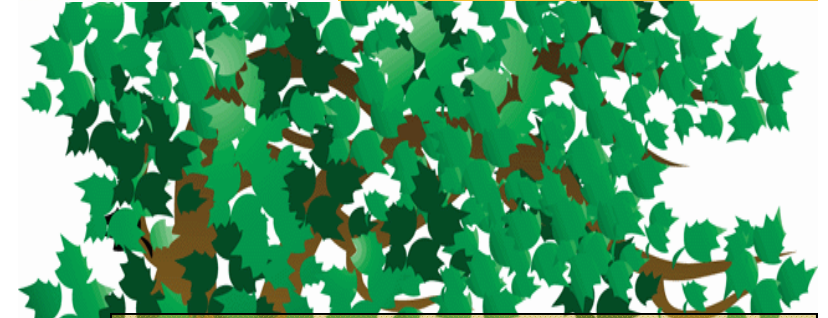
Reverend Jane Allen Middleton, Resident Bishop
Rev. Dr. Pamela Ford, State College District Superintendent
Reverend Howard T. Woodruff, Lead Pastor (238-1630)
Shane Landherr, Intergenerational Pastor (359-9447)
Karin Garner, Office Manager (237-3549)
Patty DeCapria, Lay Leader (238-6794)
Emily Gregory, Associate Lay Leader (238-8769)
Barbara Sommers, Assistant Lay Leader (466-6086)

Electronic Addresses

Church Email:mtnittanyumc@comcast.net
Church Website: www.MtNittanyUMC.org
Susquehanna Conference:.....www.susumc.org
State College District Website:..www.umcstatecollege.org



WORSHIP BROCHURE



WE GATHER

PRELUDE
GREETING AND PREPARATION FOR WORSHIP
OPENING PRAYER
OPENING HYMN "To God Be The Glory" #98

WE HEAR AND PROCLAIM

FOCUS SCRIPTURE *Galatians 5:1, 13-25* #1021
ASSEMBLY TIME "Be a risk taker"
PREPARATORY HYMN "Spirit of God" #2117
MESSAGE "Go out on the Limb"

WE RESPOND

DEDICATION OF THE MEMORIAL GARDEN ANGEL
OUR PRAYER TIME
OUR OFFERINGS
The Collection
Offertory
Doxology "Praise God from Whom all Blessings" #95

WE GO TO SERVE

CLOSING HYMN "Grace Alone" # 2162
BENEDICTION
BIDING HYMN "Thank You Lord" # 84
POSTLUDE

SUNDAY, JUNE 20, 2010

We are blessed by your presence here! Welcome to this time of worship.

What freedom we have in knowing that, by believing in the name of Jesus, we are all saved. But we must use caution that we do not allow that freedom to become reason for us to over indulge and forget that we are called to be servants of one another.

Our faith calls us to "go out on the limb" for others and for Christ. This morning, we hear exactly what that means for us and for our community.

Today we welcome back Rev. Marian Hartman who served as our pastor from 2003 through 2006. "REV" returns to bring our message and to participate in a very special moment in today's experience!

May God bless us as we worship together in His Holy Temple!

Sermon Notes:

ANNOUNCEMENTS

Visitors...We are blessed by your presence with us today! We ask that you take a moment to complete a visitor's card and place it in the offering plate during our morning offering.

Difficulty hearing? To enhance your worship experience with us, we want you to know that we have audio enhancement equipment available, just ask our Sound System Attendants.

TODAY'S MISSION FOCUS: *A Woman's Concern Pregnancy Resource Clinic*


A Woman's Concern exists to educate, encourage and empower men and women to make informed life choices. Founded in 1984, A Woman's Concern: Pregnancy Resource Clinic began as the Centre Region Crisis Pregnancy Center. They are a locally organized and funded Christian pro-life, non-denominational community service. The clinic provides a variety of free and confidential services to meet the needs of individuals throughout the community.



The ministry is driven and maintained by a team of volunteers. . If you would like more information on becoming a volunteer, please contact Ann Gale @ 234-7341. Please make a generous donation today.

BE A HERO! Give Blood. On Thursday, July 8th, the Red Cross Blood Mobile will be having a blood drive here at the church. To make it interesting, I am laying down a challenge. We are going to have a man vs. woman contest to see which sex is more giving! The blood donation will occur in the FLC from noon to 6 p.m. Robert Owens will be in the vestibule between worship experiences to make your reservation. So man up and give the "Gift of Life!"

Congratulations to Mike and Kelly Fry on the birth of their first child, Elin. Born Wednesday, June 16 at 10:47 a.m. and weighed 7 lbs. 12 ozs. God's continued blessings to you and your new little girl!

If you would like to provide **SPECIAL MUSIC** during the Summer months, a signup sheet is hanging on the door (next to pastor's office)  in the narthex. Even if you don't have music picked out yet, you can reserve a date that works for you. Please call the church office with the title and information for the bulletin by Wednesday of the week prior to your date of ministry.

ANNUAL BLOCK PARTY - Plans are already underway for our annual Block Party to be held on Sat. Aug. 7th from 5 to 8 pm. Family-friendly entertainment, games, prizes for everyone! **VOLUNTEERS ARE NEEDED!** Food prep, outdoor activities, audio/visual and so much more! Watch the bulletin and newsletters for all the details. Talk with Andrea Grazzini TODAY! Get the word out to friends, family, neighbors! **BLOCK PARTY 2010** is just around the corner!

SIGHT & SOUND Bus Trip... Wednesday, Aug 18th Cost \$95 (w/ reservation & deposit by 7/1) Price includes Cole Transportation Bus fare, admission to the show "Joseph" and Lunch @ Dienners Restaurant. Bus will leave Faith UMC in Bellefonte. Talk with Emily Gregory for more details.

A new **FLOWER** schedule is located on the closet door in the narthex. For many years, *Phyllis Dreibelbis* took care of this ministry, and we thank her for her labour of love, but she has made the decision to not continue any longer. We welcome *Joan Lassman* who has graciously agreed to continue this ministry. To both ladies we say again, Thank you for your dedication and service to the Lord and this congregation!

PLEASE NOTE: Pastor Howard will be away at Soccer Camp all week. Please call Pastor Shane @ 359-9447 in an emergency.